



Product Data Sheet

Vehicle Covert Dipole

TETRA UHF

Covert Vehicle Dipole Antenna

VCD

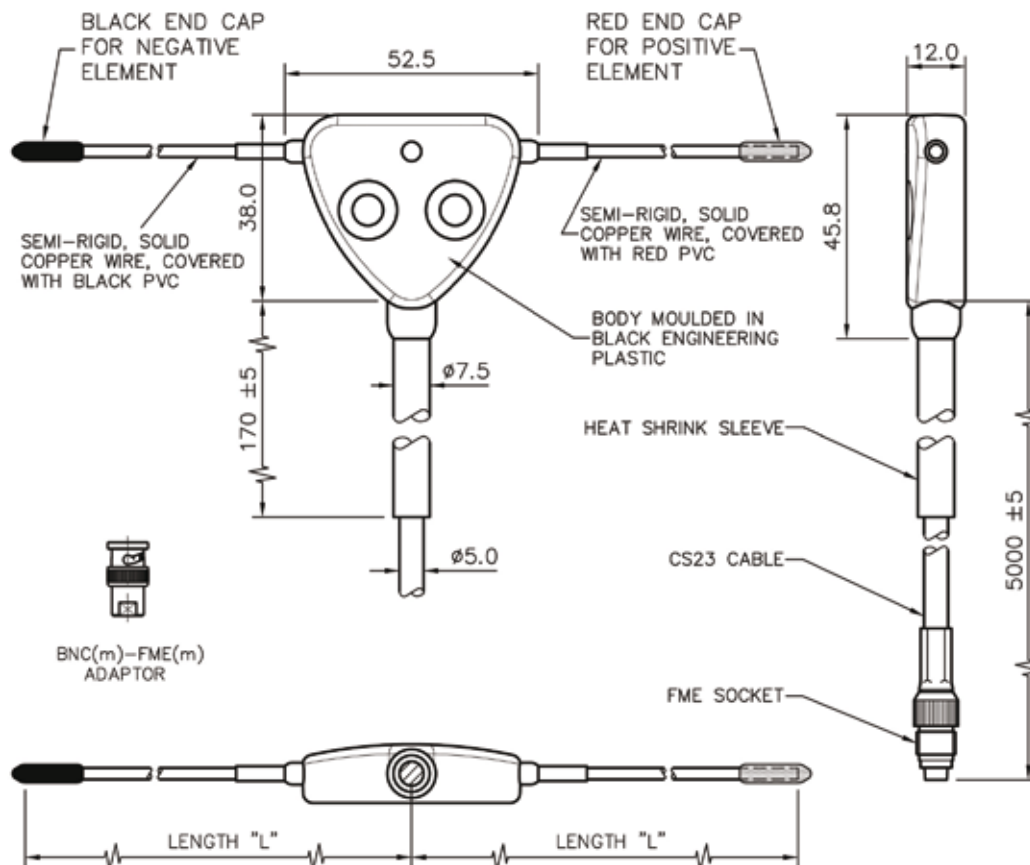
- Dipole construction
- Covert bumper mounting
- Flexible wire elements



The covert vehicle dipole antenna is specifically designed for covert installations. Where the presence of an antenna must be undetectable.

This specialist antenna can be tuned to either S1 band or S2 band when fitted simply by cutting down the radiating elements, ensuring that a good VSWR match can be achieved.

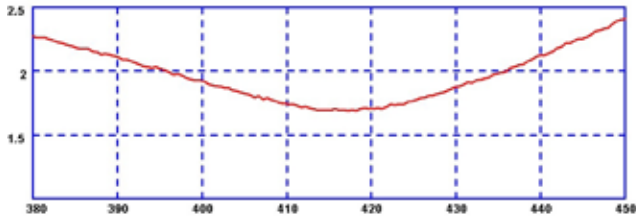
Technical Drawing



TETRA UHF

Covert Vehicle Dipole Antenna

Typical VSWR



Part No.		VCD-S1-BL	VCD-S2-BL
Electrical Data			
Frequency Range (MHz)		380-400	410-430
Operational Band		S1	S2
Gain: Isotropic		2dBi	2dBi
Compared to ¼ wave		0dB	0dB
Ground plane		Not required	Not required
Impedance		50Ω	50Ω
Max Input Power (W)		25	25
Mechanical Data			
	Antenna element uncut	330	300
Dimensions (mm)	Length	38	38
	Width	52.5	52.5
	Thickness	12	12
	Operating Temp (°C)	-40° / +80°C	-40° / +80°C
Body	Material	Engineering plastic	Engineering plastic
	Colour	Black	Black
Positive antenna element	Material	PVC covered semi-rigid, solid copper wire	PVC covered semi-rigid, solid copper wire
	Colour	Red	Red
	Cap colour	Red	Red
	Uncut length (mm)	138.75	123.75
Negative antenna element	Material	PVC covered semi-rigid, solid copper wire	PVC covered semi-rigid, solid copper wire
	Colour	Black	Black
	Cap colour	Black	Black
	Uncut length (mm)	138.75	123.75
Cable Data			
Type		CS23	CS23
Length (m)		5	5
Thickness (mm)		5	5
Termination		FME socket with BNC adaptor	FME socket with BNC adaptor

Panorama Antennas Ltd
Frogmore, London, SW18 1HF, United Kingdom

T: +44 (0)20 8877 4444
F: +44 (0)20 8877 4477

E: sales@panorama-antennas.com
www.panorama-antennas.com

PANORAMA  ANTENNAS